



Plot 9 (The Severn)

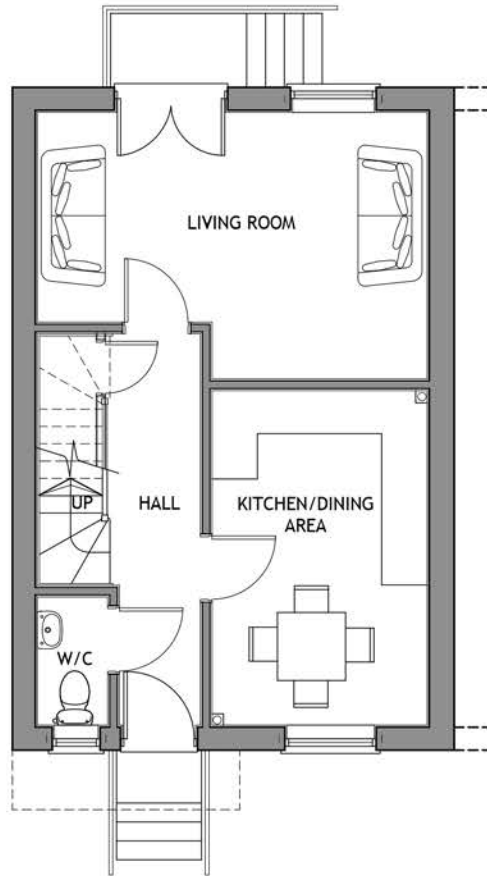
For all information relevant to this and other developments, please contact Seagate Homes:
T: 08448 569767 E: bernard.snowden@seagatehomes.co.uk



Artists Impression

Multi award winning developer Seagate Homes are delighted to offer this opportunity to own a 3 Bedroom home, located in a cul-de-sac location on the outskirts of Spalding town centre.

The Severn boasts modern accommodation comprising of, Entrance Hall, Lounge, Kitchen/Diner area, Cloakroom, 3 Bedrooms, Bathroom, Parking Spaces and Front and Rear Gardens.



GROUND FLOOR

LIVING ROOM

5.18m x 3.52m MAX 17' x 11' 5" MAX

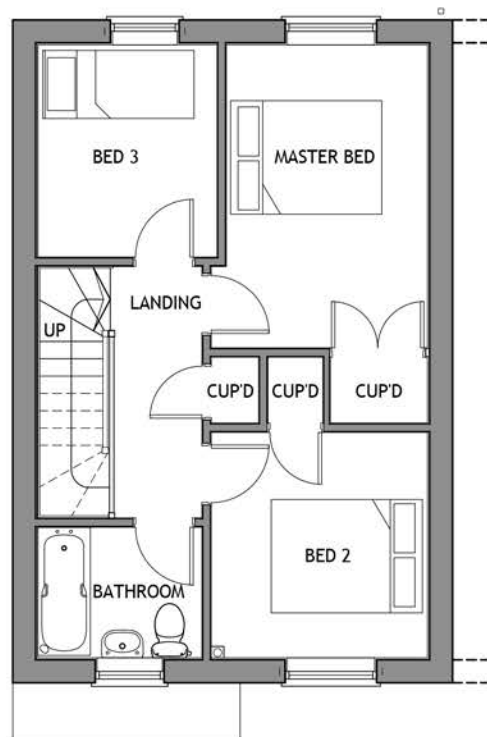
KITCHEN/DINING AREA

4.41m x 2.95m 14' 4" x 9' 6"

WC

1.78m x 1.03m 5' 8" x 3' 3"

Max Dimensions



FIRST FLOOR

MASTER BED

4.00m x 2.74m 13' 1" x 9'

BED 2

2.98m x 2.92m 9' 7" x 9' 5"

BED 3

2.82m x 2.38m 9' 2" x 7' 8"

BATHROOM

2.20m x 1.78m 7' 2" x 5' 8"

Max Dimensions